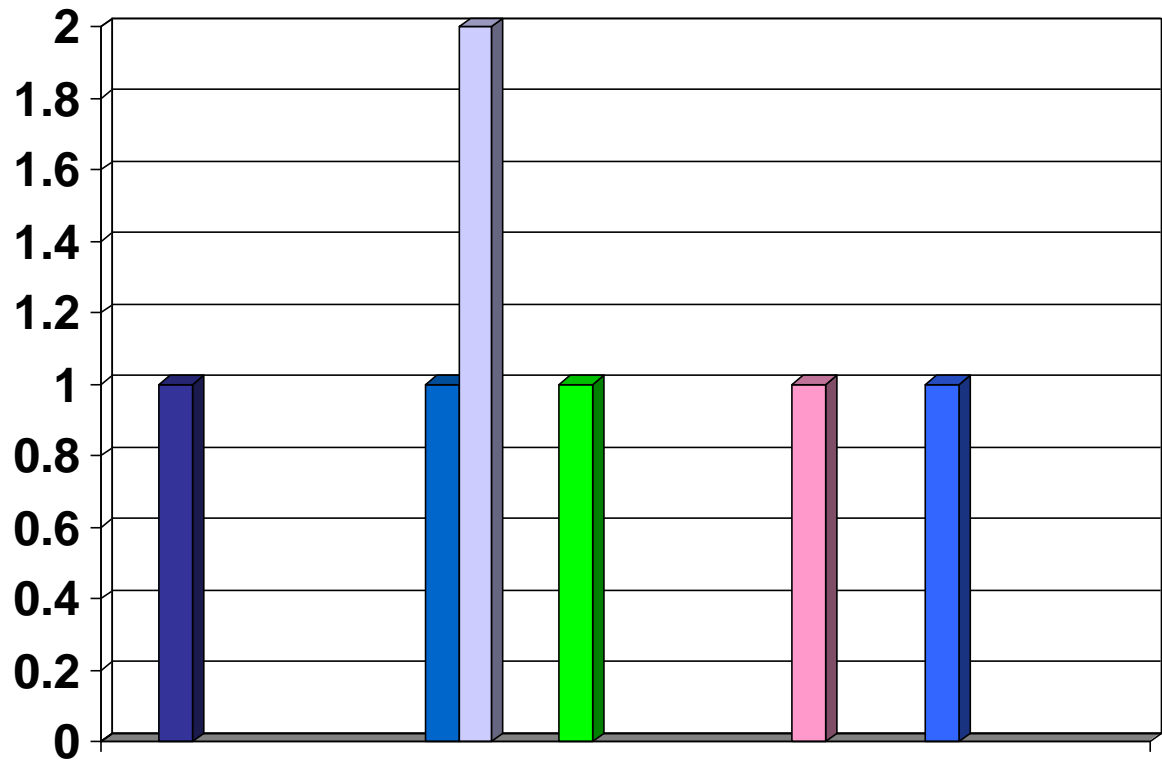


Incident Statistics Lough Erne 2010



- Vessel Sinking/Taking Water
- Vessel Aground
- Vessel/Person Appears in Diffc
- Vessel drifting/dragging anchor
- Vessel on Fire
- Vessel Overdue
- Vessel Unsure of Position
- Vessel Capsized
- Vessel Abandoned
- Gear Fouled/Failure
- Machinery Failure
- EPIRB
- Flare Report
- Person in Water
- Person Cut Off/Stranded
- MISPER
- Medevac
- Diving
- Ordnance
- Accident Prevention & Surveillance
- False Alert (good intent)
- False Alert (malicious intent)
- Fatality/Body Recovery
- Counter Pollution
- Suicide/Attempted Suicide
- Animal Rescue
- Aircraft Emergency
- Assisting Other Authorities
- Adverse Conditions
- Collision



Safer Lives, Safer Ships, Cleaner Seas